

Raleigh-Durham Airport Authority



Annual Report 2006



Table of Contents

3

RDU Airport Authority

Letter from the Chairman and Airport Director
RDU Authority Board

5

Year In Review

2006 Year In Review

7

Air Service

RDU Gains Service to the West
Delta Begins Service to LA
JetBlue Launches Service at RDU
More New Destinations and Additional Service
Cargo Operations Going Strong

9

Customer Service

Customer Service Remains Top Priority
100 Club Recognizes 100 Winners
Volunteer Ambassadors Give Nearly 9,000 Hours
Starbucks Comes to RDU
XpresSpa Opens
Observation Park Gets a Facelift

12

Airport Development

The New Terminal C
Terminal A on Track for Major Redevelopment

14

Our Community

RDU Conducts Regional Economic Impact Study
DBE Program Hosts Transportation Conference
Thousands of Military Personnel Visit USO
RDU Celebrates 20th Anniversary of Longest Runway
RDU Continues to Implement Environmental Initiatives

17

Financial Report

2006-2007 Financial Report
Fitch Rates RDU Revenue Bonds 'A+'



Letter from the Chairman and Airport Director

Big Things are Happening At RDU



Steve Toler
Chairman, Airport Authority



John Brantley
Airport Director

The year 2006 has been an important one for the Raleigh-Durham International Airport. After years of preparation, the Raleigh-Durham Airport Authority began the construction phase of the new Terminal C. Over the course of 2006, we have seen a steel skeleton of the new terminal rise from its foundations. You can track the construction progress online, where RDU has posted a [Terminal C photo album](#).

While we started the year saying goodbye to Independence Air, we were able to celebrate in July with the addition of JetBlue. Throughout the year, airlines added nonstop service to Los Angeles and Columbus and added flights to Boston, New York, Orlando and Tampa. As 2007 kicked off, new service and a new airline were on the horizon.

The number of passengers traveling through RDU in 2006 grew to 9.4 million, up from 9.3 million in 2005. Throughout most of the year, airlines continued to constrain the number of seats available to passengers. However, demand for air travel was high with airlines reporting average load factors,

which refers to number of seats filled, of 76 percent. In October, the long decline in available seats on flights serving RDU finally reversed course, a very encouraging indicator that travel will continue to grow in 2007.

Both air cargo shipping and flight operations declined about 2 percent and the number of vehicles parking in the public lots stayed the same. The number of taxi trips grew nearly eight percent, the third year in a row that taxicab trips from RDU have shown positive growth.

As always, RDU continues to focus on the way our passengers travel and ways to make their travel experience better. In 2006, the Airport Authority led a unified customer service approach with the Customer Service Council. Through the council, Authority and airport tenant employees work together to set and achieve customer service standards.

The Airport Authority looks forward to even more new air service and continued progress on the construction of the new terminal. 2007 promises to be another strong year for RDU.

W. Stephens Toler,
Chairman, Airport Authority

John Brantley
Airport Director



RDU Airport Authority Board

About the RDU Airport Authority

The Raleigh-Durham International Airport is governed by the Raleigh-Durham Airport Authority, an eight-member board. The cities of Durham and Raleigh and the counties of Durham and Wake appoint two members each to the Authority board for two-year terms. The Airport Authority is a governmental body responsible for the development, operation and maintenance of the airport.



RDU Airport Authority members celebrate the groundbreaking for the new Terminal C on March 31, 2006. Pictured from left: W. Stephens (Steve) Toler, Michael A. Weeks, Kim D. Frazier, Terry K. Yeargan, David (Tim) T. Clancy, Craigie D. Sanders, Robert D. (Robb) Teer (not pictured) Tonita F. Lipscomb.

Airport Authority Board Members:

- W. Stephens Toler,
Chairman, Durham County
- Michael A. Weeks,
Vice Chairman, Wake County
- Craigie D. Sanders,
Secretary, Durham County
- Terry K. Yeargan,
Treasurer, Wake County
- Tonita F. Lipscomb,
City of Durham
- Robert D. Teer, Jr.,
City of Durham
- David T. (Tim) Clancy,
City of Raleigh
- Kim D. Frazier,
City of Raleigh



Airline Passengers:

- 9,407,697 passengers
- 25,775 passengers per day
- 1 percent growth rate

Aircraft Operations:

- 245,099 takeoffs/landings
- 671 operations per day
(includes air carrier, general aviation and military operations)

Air Cargo:

- 116,304 tons
- 319 tons/638,000 pounds per day

Public parking:

- 1,988,345 vehicles
- 5,448 vehicles per day

Outbound taxi trips:

- 217,329 trips
- 595 trips per day
- 7.8 percent growth

RDU Employees:

- 4,500

2006 Airline Service

Top 10 RDU Markets:

- Philadelphia, Atlanta, New York-LaGuardia, Chicago O'Hare, Orlando, Dallas-Fort Worth, Newark, Boston-Logan, Las Vegas, Tampa

Airline Market Share:

American and American Eagle:.....23.0 percent
Delta and Delta Connection:19.0 percent
Southwest:18.0 percent
US Airways /America West and US Airways Express:..16.5 percent
Continental and Continental Express:.....7.0 percent
Northwest and Northwest Express:6.5 percent
United Express:.....5.0 percent
AirTran:.....3.0 percent
Air Canada:.....1.0 percent
JetBlue47 percent



General Information

Location: Wake County, North Carolina, USA;
11 miles northwest of Raleigh,
10.5 miles southeast of Durham
and 17 miles east-southeast
of Chapel Hill

Property: 5,100 acres

Elevation: 436 feet above mean sea level

Latitude: N 35° 52' **Longitude:** W 78° 47'

Facilities

Garage Parking: 11,021 public spaces

Park & Ride

Parking: 9,105 public spaces

Terminal A: Main concourse opened 1982;
renovated and expanded
1986 and 1998; 23 gates

Terminal C: Opened June 1987; currently
being redeveloped
and expanded to 990,000
sq. ft. and 32 gates

Runway 5L-23R: Length 10,000 feet

Runway 5R-23L: Length 7,500 feet

Runway 14-32: Length 3,550 feet

Observation

Park: Opened 1987;
renovated in 2007

Business

Flights 458 daily arrivals and departures

Destinations 38 destinations* served
with nonstop flights

Airlines 9 major airlines;
15 regional airlines

Passengers 9.4 million passengers

Cargo 116,304 tons

Key Expansion

Terminal A Redevelopment will begin
in late 2008

Terminal C New terminal construction
through 2010

** As of December 2006 — seven new destinations
to start in first quarter 2007.*



Air Service at RDU

Air Service



Seven new destinations are scheduled for 2007; Los Angeles service began in June, 2006. The new destinations are shown in orange.

RDU Gains Service to the West

Nonstop service between RDU and Los Angeles, San Francisco and Denver were at the top of the list as targets for expanded air service, according to the Airport Authority's most recent air service study. By the end of the year, Los Angeles and Denver were added to RDU's list of nonstop destinations.

Delta Begins Service to Los Angeles

[Delta](#) began nonstop service between RDU and Los Angeles in June. The new service features one roundtrip flight operated with the 150-seat Boeing 737-800 aircraft. The flight opens up the West Coast to area travelers.

Los Angeles continues to be a popular destination for both business and leisure travelers. An estimated 377,000

people travel between the Triangle and Los Angeles each year. Delta reports that there is strong demand for the nonstop flight.

At the end of the year, [United Airlines](#) announced nonstop service to Denver, which is set to begin in April 2007.

JetBlue Launches Service at RDU

[JetBlue](#) initiated operations at RDU on July 20, 2006, joining Southwest and AirTran as RDU's third low cost carrier. The airline offers four daily departures to John F. Kennedy Airport in New York and one daily nonstop to Boston. JetBlue uses new Embraer 100-seat jets that feature a TV set at each seat and XM satellite radio. The aircraft also features GE aircraft engines manufactured in Durham, NC.





Cargo Operations Going Strong

More than 116,000 tons of cargo were imported and exported in 2006. Major cargo operators serving the Triangle region are Airborne Express (ABX), BAX Global, DHL, Menlo Worldwide Forwarding, Federal Express and United Parcel Service (UPS). There are also several freight forwarders on the airport. Learn about [cargo at RDU](#).

World's Largest Airplane Lands at RDU

In the world of cargo, the [Antonov An-225](#) is a superstar. A six engine, ultra-heavy, transport aircraft, the Antonov An-225 is the world's largest airplane. The Antonov An-225 landed at RDU on October 27 to pick up a 120 ton power generator for the African nation of Tanzania.

General Aviation Facility Now Processing All Charters

In 2006, RDU consolidated all charter flights to the General Aviation (GA) area. All sports and other special charter operations now leave from the [General Aviation Terminal](#) and arrive through one of the two [Fixed-Base Operators](#). This new operating change allows for additional security screening measures.

The GA Terminal continues to support all other general aviation operations and special event rentals and houses several aviation-related offices.

With the arrival of JetBlue airlines in July 2006, RDU not only gained an airline but also three new flights to popular destinations New York and Boston.

New Service Continues to Land

Airlines at RDU continued to add service to new cities, as well as additional service to popular leisure and business destinations. In 2006, [American Eagle](#) restarted service to Columbus, OH. To meet increased demand, other air carriers added more flights from RDU to Atlanta, Boston, Baltimore, Houston, Philadelphia, Orlando, New York (JFK) and Tampa.

In addition to nonstop service to Denver, 2007 will also bring a new airline to RDU. At the beginning of the year, [Express Jet](#) announced service to six new destinations: Birmingham; Jacksonville, FL; Louisville; Kansas City, MO; New Orleans and San Antonio.

American Airlines will begin serving Kansas City, Louisville and Jacksonville in April 2007. American Airlines also plans to upgrade service to St. Louis, Austin and LaGuardia by using larger aircraft on the routes.

United will begin using bigger, mainline jets for some of its Chicago flights.



Customer Service at RDU

Customer Service



RDU celebrated Customer Service Week in grand style with a June open house in the parking garage atrium.

Customer Service Remains Top Priority

RDU's vision statement is to be the best airport in the world known for its uncompromising service as judged by our customers, employees and owners. This vision guides the Airport Authority as it initiates new customer service programs, develops capital improvement projects and pursues new air service.

RDU has an ongoing commitment to customer service. We continually evaluate our services with tools such as an airport-wide customer service council, mystery shopping, customer surveys and other forms of customer feedback.

In 2006, the [Customer Service Council](#) took off as a leader in the airport's customer service efforts. Through

the council, the Airport Authority and its tenants developed initiatives to improve and measure customer satisfaction. The Customer Service Council is the first unified customer service effort for all companies operating at RDU.

This year, the Customer Service Council launched the SOAR (Smile Offer Assistance Repeat) initiative. The five-month program encouraged all airport employees to provide high quality customer service. Each month, employees airport-wide were recognized for outstanding service.

The [SOAR](#) program was recently highlighted by the Airports Council International (ACI) as an exemplary customer service initiative.





RDU is pleased to announce two Starbucks will open in 2007.

100 Club Recognizes 100 Winners

RDU's 100 Club is a way to recognize our business partners who excel in customer service by scoring perfect scores on mystery shop evaluations. Upon receipt of a perfect mystery shop score, individuals are awarded a 100 Club lapel pin.

At the annual recognition ceremony in winter 2006, RDU recognized 134 workers with perfect 100 scores. The Paradies Shops and Anton Airfood are the two companies that consistently have the most employees recognized. The Transportation Security Administration (TSA) was recognized as the Most Improved over last year.

Volunteer Ambassadors Give Nearly 9,000 Hours

[RDU Volunteer Ambassadors](#) provide information, assistance and travel-related services to passengers, visitors and the general public. They help travelers navigate the airport and locate airport services. More than 30 volunteers donated an average of 270 hours each. The grand total of volunteer time for 2006 was 8,931 hours.

Starbucks Comes to RDU...and Other New Concessions

RDU currently features [40 shops and restaurants](#) for travelers to enjoy. The Airport Authority and its concession partners continually review the shops and restaurants available and make changes to the program to enhance the customer experience.

In late 2006, RDU announced the addition of two Starbucks on the Terminal A concourse. Both are full service beverage centers with all of the standard Starbucks' menu items. Also coming to Terminal A is Wolfgang Puck Gourmet Express. The popular Golden Corral and A & W restaurants are expanding and Fresh Attractions is coming to the Town Square Food Court.

More breakfast options are also coming to RDU. Three Great American Bagel restaurants will be featured in Terminals A and C. The restaurants replace the Seattle's Best/Vie de France coffee shops and provide more dining and coffee selections for travelers.

Customer Service





RDU welcomes the addition of two XpresSpas, one in each terminal.

XpresSpa Opens

At the end of 2006, major construction was completed on the first of two luxury XpresSpas at RDU. The first spa opened in Terminal C, across from gate 15, on Friday, February 9. Later in the month, the second and larger spa opened in Terminal A, between gates 19 and 20.

[XpresSpa](#) offers travelers a full service airport spa with a luxurious atmosphere of peace and tranquility. From facials to manicures, these spas have it all. Designed with the traveler in mind, XpresSpa offers massage treatments that can be as short as 10 minutes or as long as 30 minutes.

RDU Exemplifies Holiday Spirit

The 2006 Thanksgiving and year-end holidays saw nearly 600,000 people travel through RDU. Before the holiday season, the Transportation Security Administration (TSA) implemented a new security measure limiting the amount of liquids and gels travelers were permitted to take in their carry-on luggage. All liquids and gels, limited to three ounces or less, are now required to be placed in a quart sized, zip-top bag.

To support the transition to the new restrictions, RDU offered free baggies to passengers as they arrived at the security checkpoint. The zip-top bags were provided courtesy of Pactiv Corporation and The Paradies Shops.

Throughout the terminals, evergreen trees donated by the Christmas Tree Growers Association of North Carolina were decorated in festive style, wreaths adorned the walls and music filled the terminals. RDU organized free concerts throughout the terminals to suit a variety of musical tastes and styles.

The shops and restaurants at RDU offered a wide range of free activities and entertainment for holiday travelers. Free caricature drawings, Godiva chocolate tastings, a life-size Hello Kitty and a variety of music rounded out RDU's holiday festivities on the concourses.

Observation Park Gets a Facelift

RDU's [Observation Park](#) has become a popular destination for aviation enthusiasts and families. The Authority closed the park briefly to undertake a major cleaning and refurbishing of the observation platform, public restrooms and surrounding area. From new safety measures on the stairs to new sand in the sandbox, Observation Park looks better than ever.

To enhance the public education component of the park, RDU commissioned new signs. On the platform, signage details the most common aircraft that fly at RDU. New signs leading to the playground offer educational information on everything from how planes fly to historic moments in aviation at RDU.



Airport Development

The New Terminal C — A Terminal for the Way Our Region Travels

RDU's largest construction project in its history is well underway. After a groundbreaking with Airport Authority Board members in March, construction crews began erecting structural steel for the new \$570 million project.

The [new terminal features](#) the latest in airport design. Intuitive way finding will help passengers easily navigate from ticketing to their gate. Ticketing islands replace the long row of ticket counters and facilitate the check-in process while decreasing congestion in the ticketing area.

The security checkpoint is greatly expanded from four to ten lanes. The new terminal also utilizes an in-line baggage screening system, removing bulky screening equipment from the ticketing area. Additionally, the federal inspection facility for international travelers is larger than its predecessor to accommodate future growth in international service.

Airport Authority Expands Scope of Project

In December 2006, the Airport Authority voted to expand the scope of the Terminal C project by including the south concourse in the terminal redevelopment. The initial project focused on the construction of a new north concourse and ticketing, security checkpoint and baggage claim areas. When completed, the new terminal triples in size to nearly 990,000 square feet. With 32 total



The new north concourse will be 650 feet longer than the previous concourse and will feature two moving walkways. When completed in 2010, the new terminal will nearly triple in size, expanding from 330,000 to 890,000 sq ft.

gates, the larger facility will meet the needs of the airport's strong local market and accommodate future growth.

The new terminal will be completed in phases between 2008 and 2010.

Art at the Airport

One of the exciting aspects of the project approved by the Airport Authority in 2006 was the selection of public art that will grace the new terminal. The artwork will be used throughout the facility to enhance the travel experience. Selected artists from around the country are designing pieces that reflect our region and ensure that passengers have a memorable journey.

The most prominent artwork will be the [sculpture that adorns the central atrium](#). Designed by Ed Carpenter, the piece will feature wood masts tipped with dichroic glass and will have LED lighting imbedded throughout. The piece forms a canopy over the central atrium and allows it to be seen from long distances.

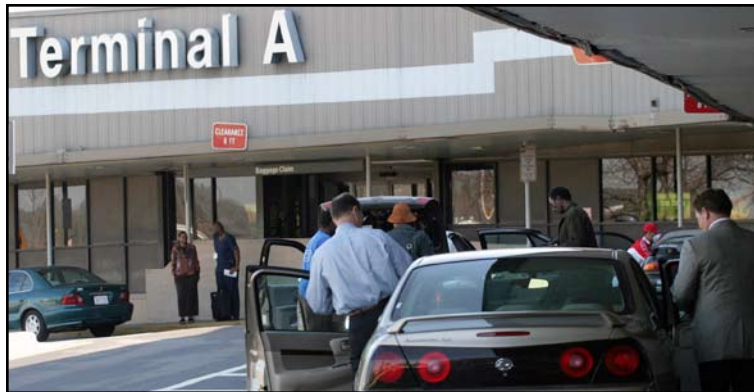
Airport
Development



Terminal A on Track for Major Redevelopment

When phase one of the new terminal opens in summer 2008, American, United and Air Canada will relocate into the new space. Phase two of the construction will then begin. Also at that time, Delta will move its operations from Terminal A to the new terminal's north concourse. Continental, Northwest and US Airways also will relocate when the entire project is completed.

When Delta moves to Terminal C, work will begin to consolidate airline operations in Terminal A. The result will be one large ticketing area and one baggage claim area, as well as a greatly expanded security checkpoint.



Renovations planned for Terminal A will allow it to operate more efficiently, be simpler to the customer, and function very much like new Terminal C.

The plan includes reconfiguring the ticketing area to create island-style counter areas affording passengers considerably more room to move about. When this phase is completed, Southwest will relocate and operate alongside AirTran and JetBlue. This will make Terminal A operate more efficiently and function much like the new terminal.

As each year comes to an end, I look forward to the next year because it will bring new challenges, new opportunities and new customers for us to serve. That's part of the excitement of the airport—it's always changing.

***John Brantley
Airport Director***





RDU is proud to be a leader in MBE/DBE participation in the North Carolina's transportation sector.

RDU's Regional Economic Impact Exceeds \$12.6 Billion

In 2006 the Airport Authority commissioned an economic impact study. The study estimates the total impact of Raleigh-Durham International Airport on the region's economy to be \$12.6 billion annually. The Center for Transportation Policy Studies at UNC-Charlotte conducted the study, which analyzed the airport's direct and indirect contributions to the 13-county Research Triangle Region.

While the airport's impact is significant, it is just one of several major forces supporting the region's economic prosperity. The collected data found the airport's impact on regional employment involves an estimated 47,760 jobs with payrolls of \$2.5 billion.

The total \$12.6 billion economic output includes both direct and indirect impacts. Direct impacts consist of revenue from airlines, airport shops and restaurants and cargo. Indirect impacts include regional employers and segments of the travel industry such as hotels and travel agencies.

RDU's DBE Program Hosts Transportation Conference

For the second year in a row, the Airport Authority teamed up with the Office for Historically Underutilized Businesses, North Carolina Department of Transportation and the Triangle Transit Authority to present a transportation industry conference for contractors, suppliers and vendors, professional service providers and the general public.

Transportation representatives from across North Carolina presented information on how to effectively market your business, build relationships and better understand aviation, highway and transit authorities.

Law Enforcement Receives 2006 Partnership Award

RDU's Law Enforcement Department received the 2006 Partnership Award from the Transportation Security Administration (TSA). The award recognizes industry partners whose accomplishments and performance distinctly benefit the interests of the United States, advance the TSA's mission to protect the nation's transportation systems and significantly enhance the TSA's ability to achieve its goals. This is the second year in a row RDU law enforcement personnel were honored with this award.





26,000 traveling military personnel visited RDU's USO in 2006.

Thousands of Military Personnel Visit USO

In 2006, the USO at RDU continued to be a popular home away from home for military men, women and their families. In December, over 5,000 military personnel traveled through the USO, up from an average of 2,000 per month. For the year, USO volunteers served 26,000 military personnel.

During the 2006 winter holiday season, the Airport Authority and the USO teamed up with the Carolina Hurricanes to raise funds for the center, which relies heavily on donations for its support. The raffle for life-size cut outs of Hurricane players, along with a donation drive, raised over \$15,000 for the USO. For more information on the USO, please visit www.uso-nc.org.

Civil Air Patrol Celebrates 65th Anniversary at RDU

The Civil Air Patrol (CAP) is an auxiliary of the U.S. Air Force that has been in existence since 1941. Operating from RDU's General Aviation Terminal, the Raleigh-Wake Composite Squadron of the Civil Air Patrol celebrated its 65th Anniversary by assisting with the Governor's tree lighting ceremony. RDU welcomed the Civil Air Patrol in 1972.

A major component of the CAP is the cadet program for young people aged 12 to 21. The cadet program gives young people the opportunity to expand their knowledge of all things related to aerospace, including practical use of chemistry, physics and math, while teaching them leadership and responsibility. There are 25 cadets at the Raleigh-Wake Composite Squadron.

RDU Celebrates 20th Anniversary of Longest Runway

April 1, 2006 marked the 20th anniversary of the opening of the 10,000-foot runway adjacent to Terminal C. The runway marked the beginning of the airport's long-term development plans for the west side of the airfield. Today, that original development plan becomes fully realized as RDU rebuilds Terminal C.

On hand to celebrate the event were all the past living chairmen of the Airport Authority. All are the leaders who have made RDU what it is today. Together, these leaders collectively have dedicated an impressive 135 years of service to RDU.



RDU celebrated all past RDUA Leadership with a Chairman's Luncheon in March 2006. Pictured are the past RDU Chairmen of the Board: (L to R, First row) Ron Gregory, Pete Allison, A.C. Elkins, Wallace Mitchell, Dillard Teer, (Second Row) Eugene Hardin, Tim Clancy (Third Row) Smedes York, Bert Collins, Ken Gibbs, and (Fourth Row) Bob Winston, Jim Hyler, Steve Toler.





Local fans packed the General Aviation area to support the home team, Carolina Hurricanes, as they pursued the 2006 Stanley Cup.

RDU Continues to Implement Environmental Initiatives

The Airport Authority recognizes its role as a steward of the environment and continually reviews its environmental initiatives. Today, all diesel-operated equipment at RDU uses biodiesel fuel. When the new Terminal C is completed, the Authority will also include areas for the airlines to charge battery-powered equipment.

Late last year, the Airport Authority began building its own consolidated waste facility. The facility will allow the airport to greatly expand its airport-wide recycling program. RDU works with airport tenants to recycle materials ranging from magazines and cans to newspapers and cardboard.

Airport Honored For Most Significant Mobility Enhancement

The [Regional Transportation Alliance \(RTA\)](#) presented three awards for the most significant regional mobility accomplishments in 2006. For the first time, an award for an enhancement to air service was given. The award recognized Raleigh-Durham International Airport for the creation of the region's only nonstop flight to the west coast. Delta began flying to Los Angeles (LAX) from RDU in June of 2006.

Beautification Award Given to RDU

The Gardeners of Wake County recently awarded the Raleigh-Durham Airport Authority its Beautification Award for 2006. The award is based on design and beauty, and the club noted that all areas throughout the airport are always beautifully maintained.

RDU has extensive landscaping, including more than 11,500 square feet of flowerbeds. Landscaping at RDU is managed by Kevin Trantham, who is the contract administrator for a 15-member daily crew from TruGreen LandCare.

RDU Celebrates the 2006 Stanley Cup Champions

During the Carolina Hurricanes' championship run, a crowd of adoring fans packed RDU's General Aviation area to welcome the team home. RDU supported the Canes by creating a special staging area for fans anxious to see the team's plane arrive. At moments like this, it is easy to see that RDU is more than just an airport, it is a community resource.



Financial Report

The Raleigh-Durham Airport Authority is a local governmental unit with the mission of developing, operating and maintaining the Raleigh-Durham International Airport.

The cities of Raleigh and Durham, and the counties of Durham and Wake each contribute \$12,500 per year to the Authority, the only local funds received by the Authority.

All revenue to the Authority is derived from rentals and fees for the use of airport facilities and services. Any revenue earned that exceeds annual operating and debt service (payment of bonds) expenses is reinvested in airport facilities.

In FY 2006-2007 (April 1, 2006 to March 31, 2007), the Authority anticipates total revenues of \$101.4 million. Of that amount, \$77.5 million is budgeted as operating revenue and \$23.9 million is designated as non-operating revenue. Non-operating revenue consists of federal and state grants, passenger facility charges collected and interest on investments.

On the expense side, \$34 million is budgeted for operating expenses during this fiscal year. Bond debt service is budgeted at \$27.4 million.

Financial Report

FY 2006–2007 Budget Summary

Revenues

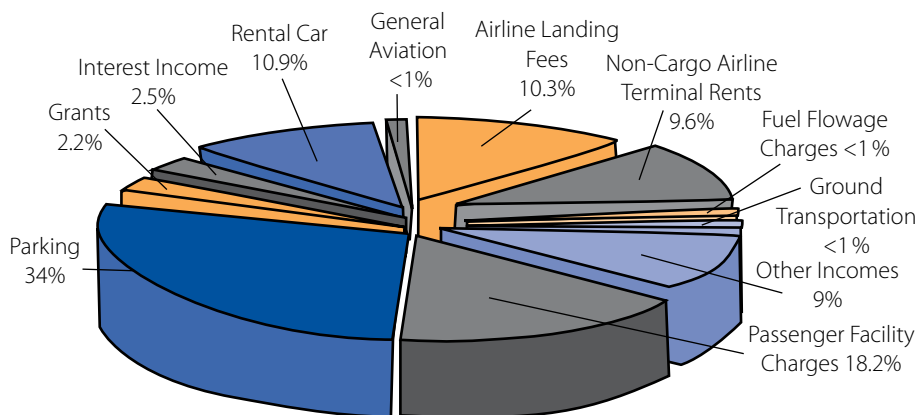
Airfield	\$10,753,318
General Aviation	\$1,016,756
Building and Grounds	\$65,718,606
Interest Income	\$2,500,000
Federal Grants	\$2,184,000
State Grants	\$0
TSA Security Grants	\$707,600
Local Grants	\$50,000
PFC Revenues	\$18,473,000
Total	\$101,403,280

Expenditures

Airport Operating Expenses	\$33,965,759
Debt Service — Interest	\$17,780,685
Debt Service — Principal	\$9,590,000
Cost Transfers to Capital Construction	\$40,066,836
Total	\$101,403,280



Total 2006–2007 Revenues: Operating and Non-Operating



Total 2006–2007 Revenues:

Largest source of revenue is in order:

- **Parking 34%**
The Airport Authority operates more than 20,000 public parking spaces. For the fiscal year ending March 31, 2007, parking revenues are budgeted at \$34.6 million.
- **Passenger facility charge 18.2%**
- **Rental car 10.9%**
Seven automobile rental companies provide service at RDU. In FY 2006-2007, \$10.9 million is budgeted as rental car operating revenue.

- **Airline landing fees 10.3%**

For FY 2005-2006, landing fees of \$0.97 per 1,000 pounds of landed weight are expected to generate \$6.6 million.

- **Non-cargo airline terminal rents 9.6%**

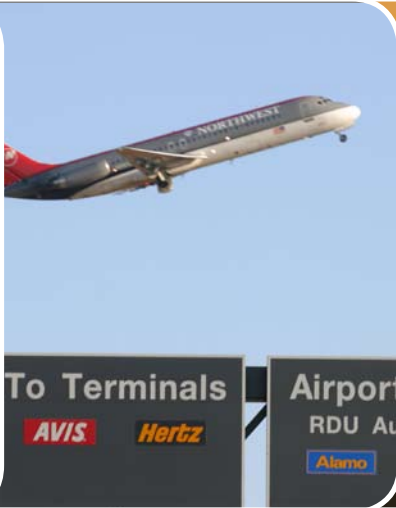
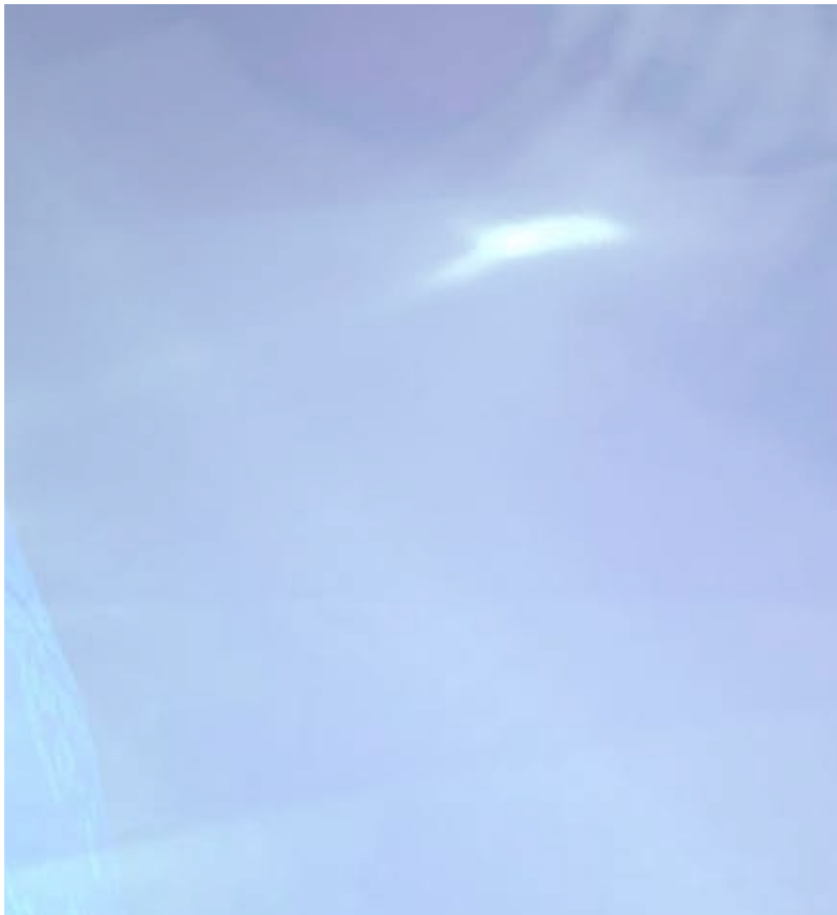
Contractual relationships with concessionaires for food, beverage, merchandise, advertising and other services generate additional airport operating revenue. As further commitment to the public, we reinvest any profit we make.

Fitch Rates RDU Revenue Bonds 'A+'

The Raleigh-Durham Airport Authority was assigned an A+ rating from Fitch Ratings, New York, for approximately \$300 million in series 2006 variable rate revenue bonds (AMT). Fitch also affirms the A+ rating on the Authority's outstanding \$331 million airport revenue bonds. Bond proceeds will finance elements of the airport's Terminal C construction project.

The A+ rating reflects the authority's strong financial position marked by high levels of unrestricted liquidity and strong operating margins; an experienced management team; the diversity of airline service at RDU; and the vitality of RDU's air trade area.





Raleigh-Durham Airport Authority • 1000 Trade Drive • PO Box 80001 • RDU Airport, NC 27623 • www.rdu.com • (919) 840-7700

